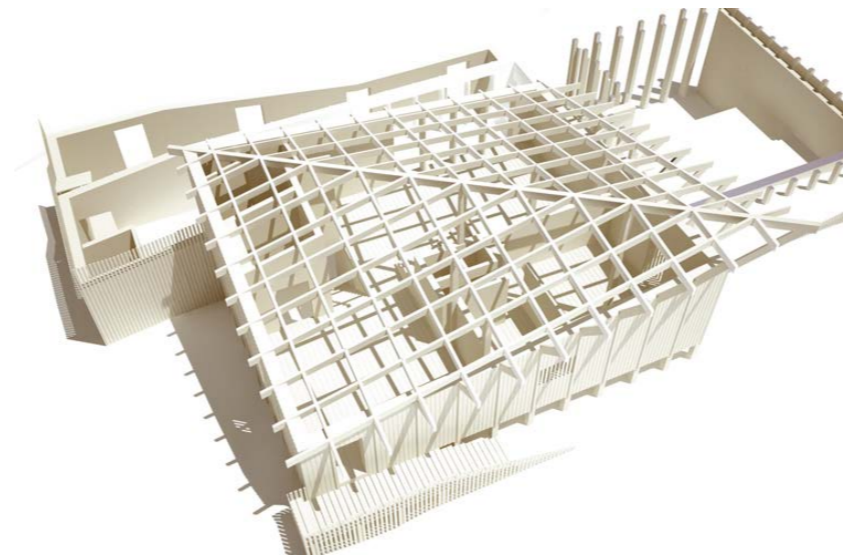


CATCH THE LOCAL BEAUTY





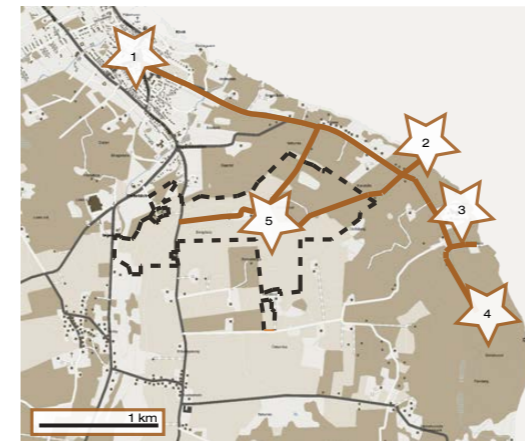
CATCH THE SURROUNDINGS

“**Catch the Local Beauty**” is a project involving a vision and a house (exhibition and restaurant). The vision is to make Kivik Art like the spider in the net, catching the best of the surroundings; the city, the agriculture, the apple industry, the sea and the national park “Stora Stenskulle”. The location is great for doing so; it’s already in the centre. The motto is; recreation, nature and art.

The building is situated on the top of the hill “Lilla Stenskulle”. It’s climbing down the hill so you don’t see everything immediately, you have to go out on the roof (a wooden deck), experiencing it together with a magnificent view over the sea and the city of Kivik. The entrance and the restaurant part is on the top, the exhibition parts are below. The view changes when you go down the building, the trees cover the horizon and you get close the wild nature.



SITUATION PLAN 1:5000



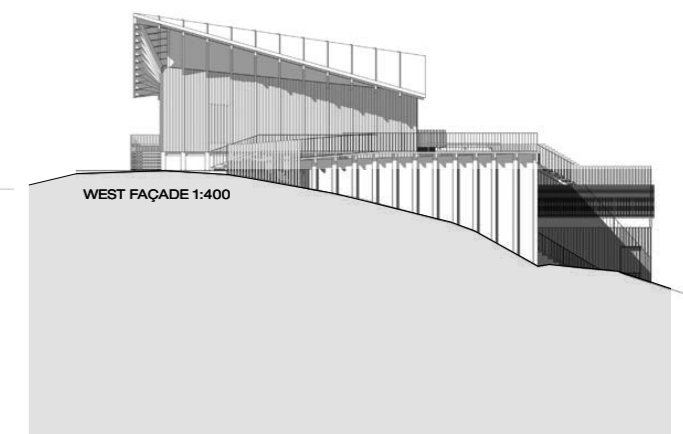
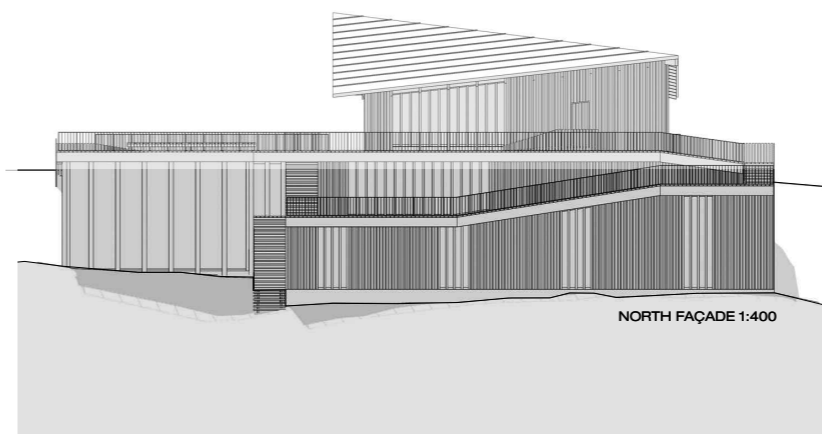
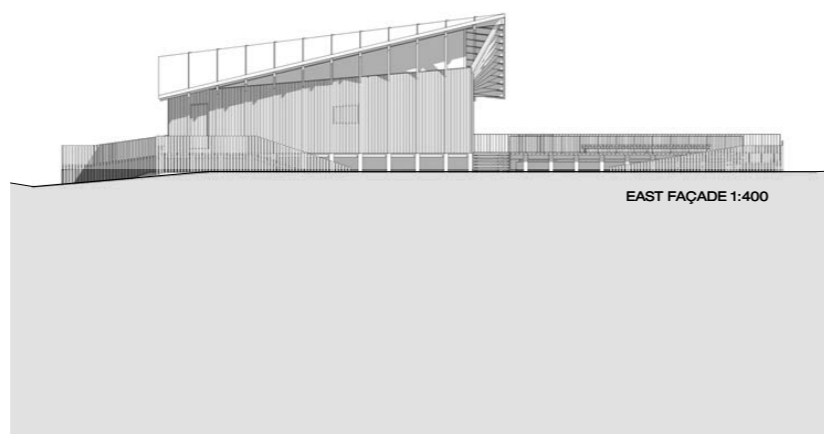
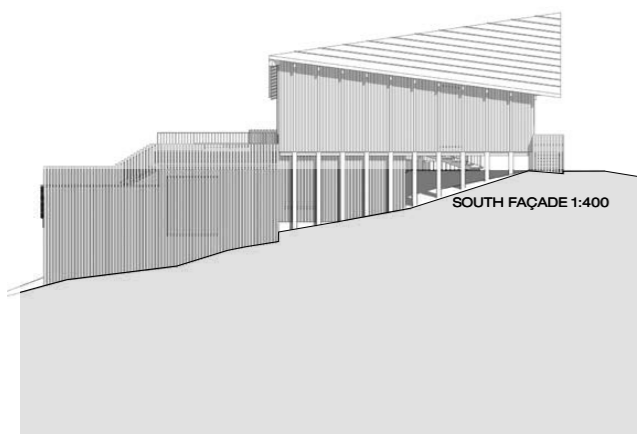
BRINGING TOGETHER THE BEST OF THE SURROUNDINGS; 1 THE CITY OF KIVIK, 2 THE SEA, THE APPLE CIDER FACTORY, 4 THE NATIONAL PARK "STORA STENSHUVUD, 5 KIVIK ART CENTER, 6 THE AGRICULTURE



LANDSCAPE SECTION 1:400

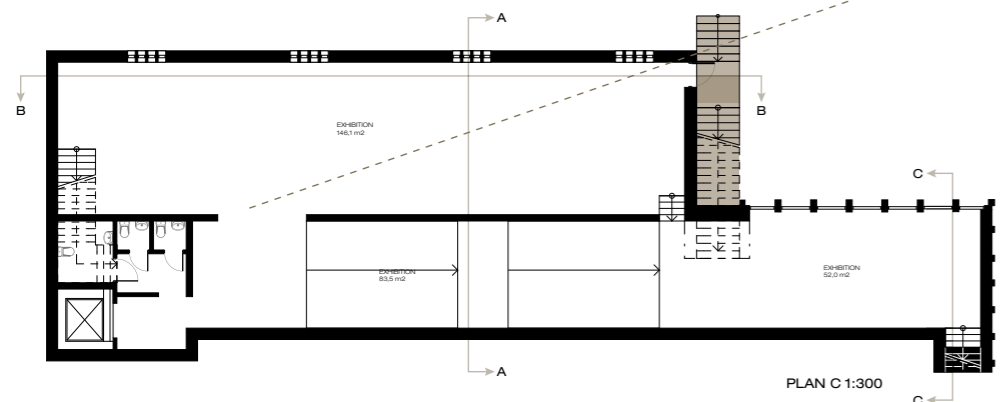
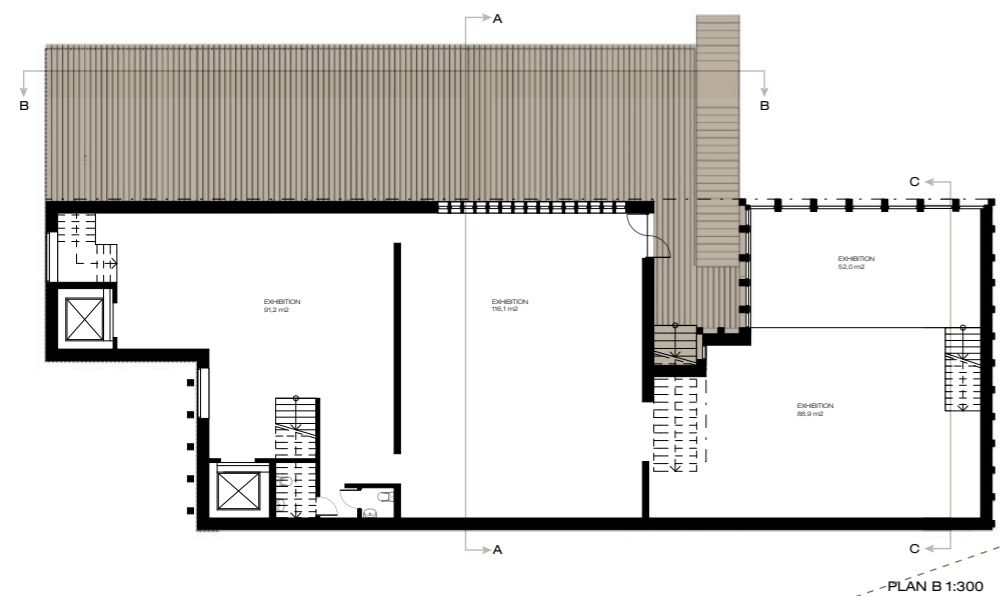
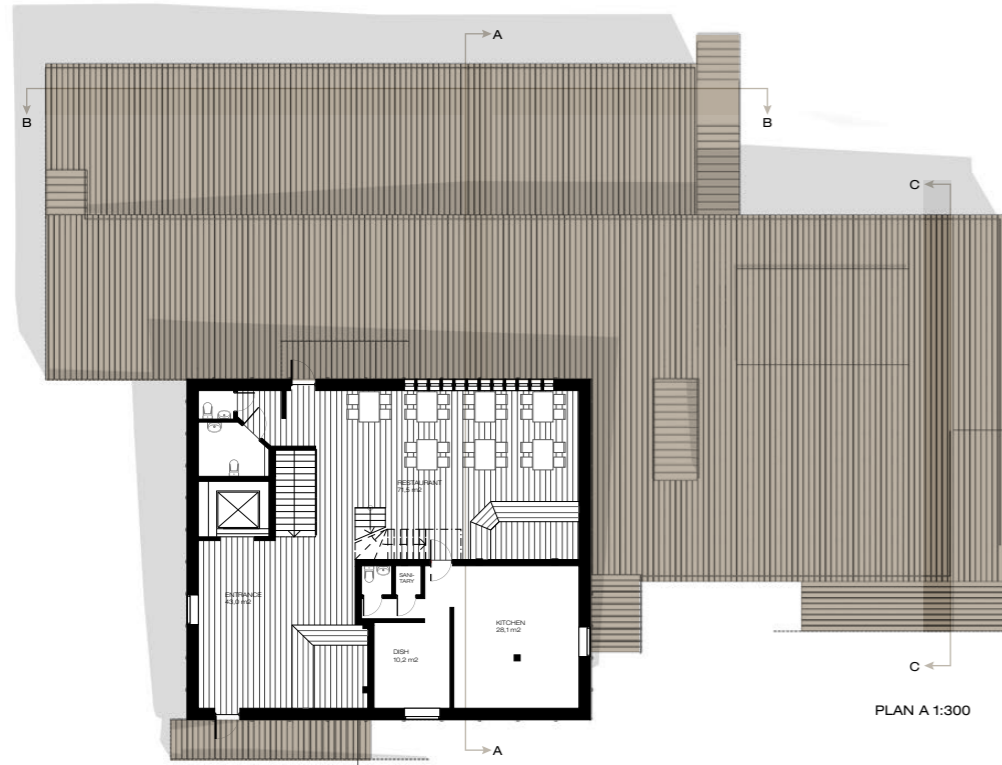


PERSPECTIVE FROM THE ENTRANCE, WITH THE VIEW OVER THE SEA AND THE CITY OF KIVIK

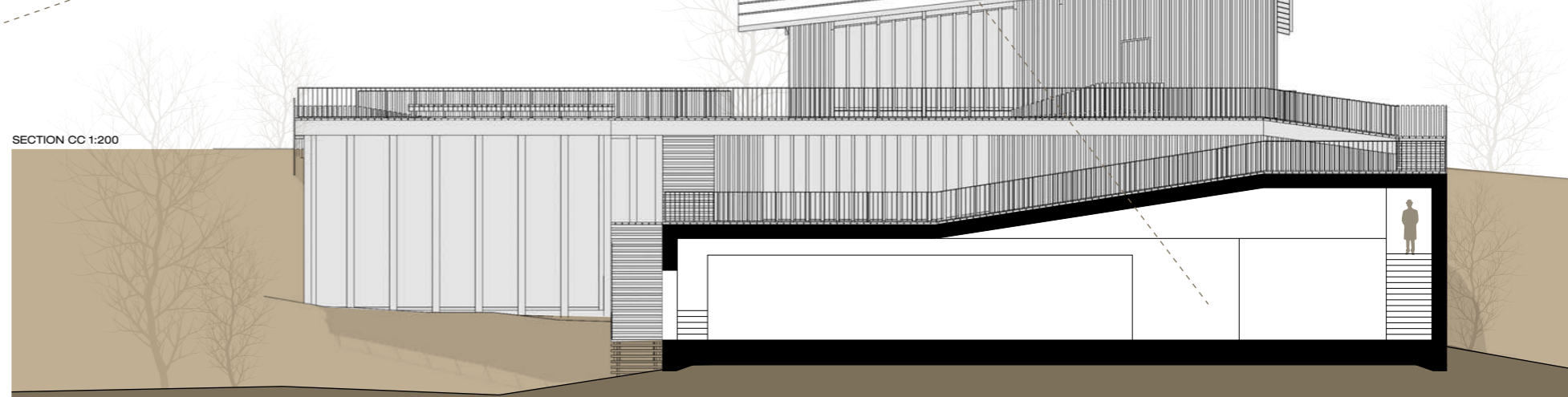
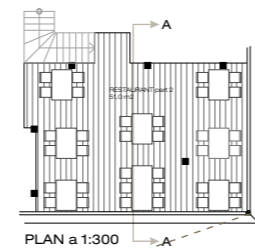


COMBINING DESIGN AND FUNCTION

The building is compact; every square meter can be used, and plain transportation area is being kept to minimum. The walls are thick, for energy saving sustainability. The interior of the house is made so you can experience it from a wheelchair, with elevators and ramps. The total area (including the inner walls and stairs) is 896 m². The two existing small buildings can be kept on the site, but it's not necessary because they have a temporary appearance.

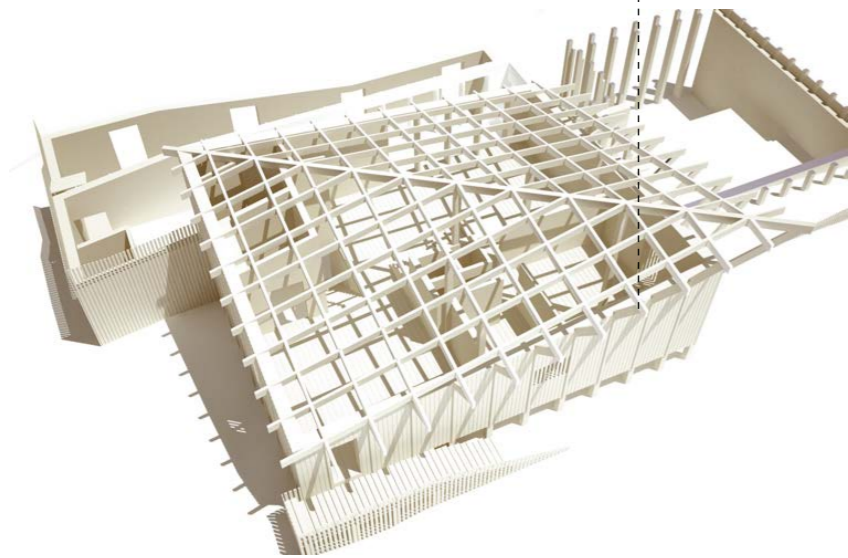
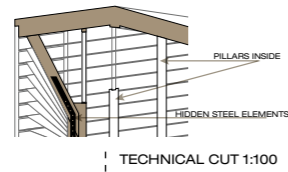


INTERIOR PERSPECTIVE FROM PLAN C, WANDERING THE LIGHT OR THE DARK PATH. DIFFERENT FEELINGS FOR DIFFERENT ART.

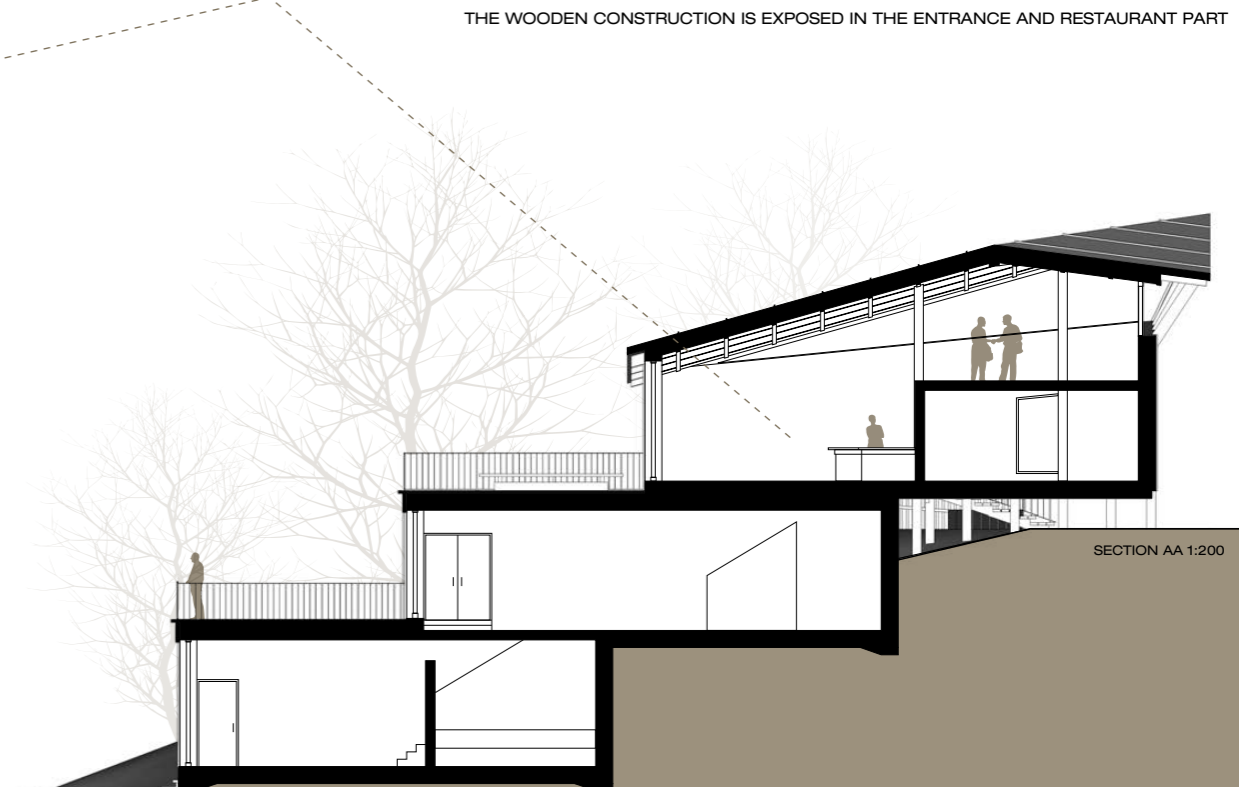
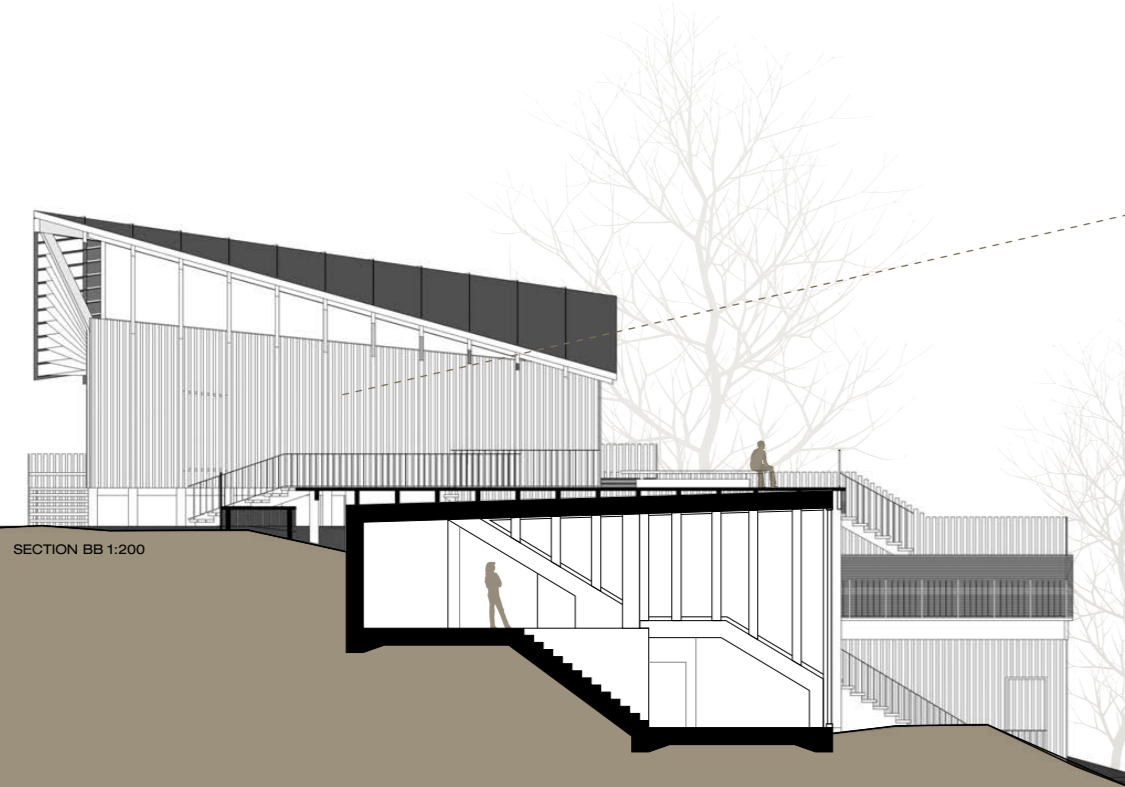


THE LOAD BEARING SYSTEM

It is almost like the wind has caught the roof and lifted it up in one corner, letting the sunlight in. The angled wooden pillars that are slightly articulated on the façade have stainless steel construction within them. They do not however carry a lot of load; strong wooden pillars directly inside carry the most of the roof weight together with the inside and outside walls, the construction is letting the glass float between the wall and the roof.



THE WOODEN CONSTRUCTION IS EXPOSED IN THE ENTRANCE AND RESTAURANT PART



CLIMBING DOWN WITH THE NATURE

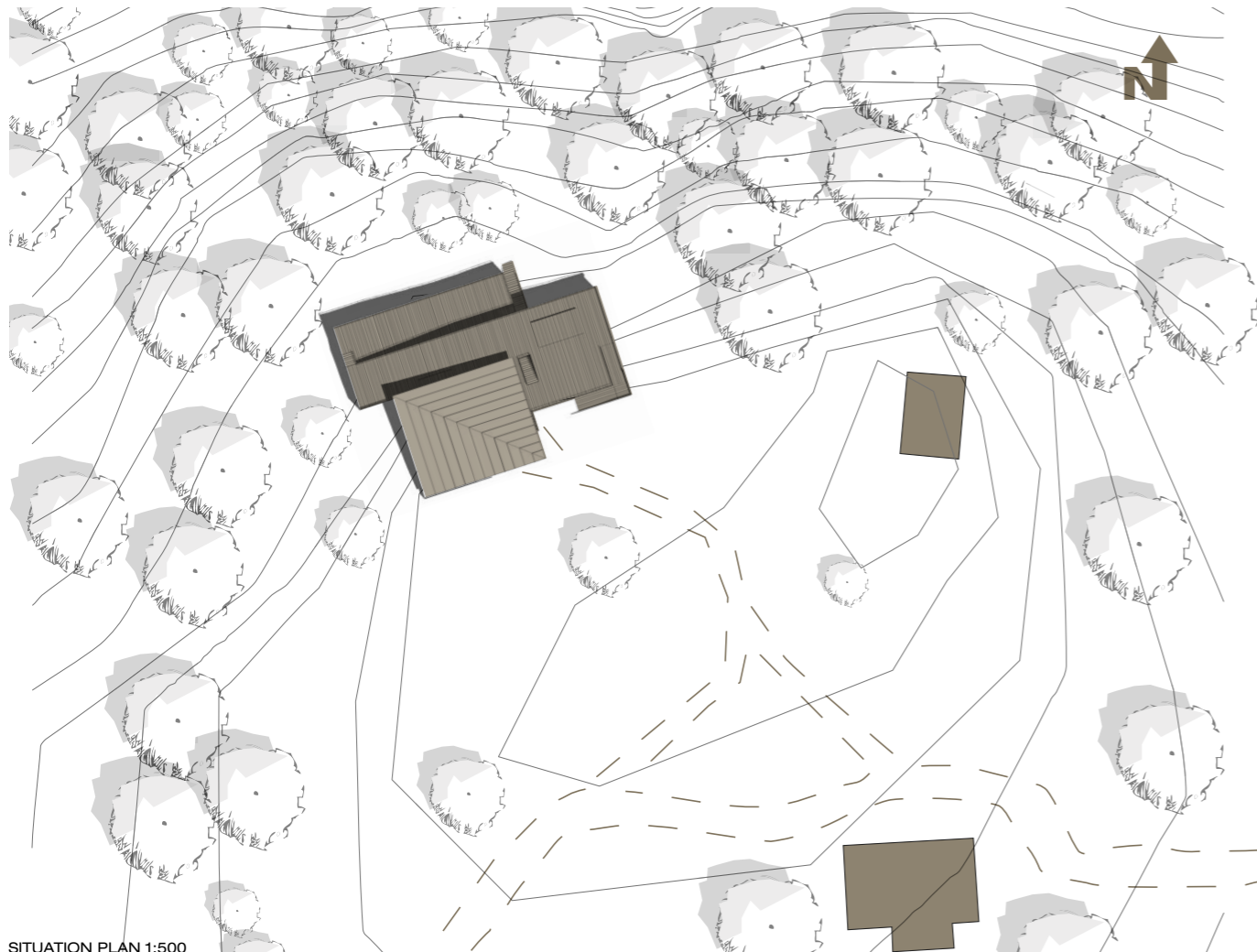
The big windows are facing north, preventing the sun to shine in directly and causing heat problems. The backside is more or less hidden by the wood if seen from a distance (except for the top-parts which have the sea overview). The best way to experience it is by being on the wooden deck roof and feeling the trees and the nature close to you.



ON THE DECK



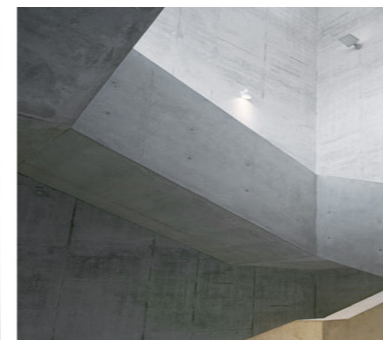
BIRD VIEW PERSPECTIVE ON THE BACKSIDE, THE RESTAURANT HAS DINING TABLES ON THE WOODEN DECK



SITUATION PLAN 1:500



WHITE PAINTED WALLS IN THE INTERIOR, ART AND SCULPTURES NEED CALM AND NEUTRAL BACKGROUNDS.



CONCRETE FOR WALLS, STAIRS AND FLOORS CLOSE TO GROUND. EXPOSED MORE IN THE INTERIOR.



LIGHT GREY STAINED PINE, BOTH ON THE FACADE AND IN INTERIOR PARTS. THIS IS THE MOST EXPOSED MATERIAL IN THE BUILDING.



THICK PINE TRELLIS, FACADE ELEMENT AND IS ALSO USED AS RAILING SYSTEM IN SOME STAIRS AND TERRACES.



CATCH THE LOCAL BEAUTY - Jimmy Bussenius - ASBF15 Arkitektur och Landskap - VT 2010